



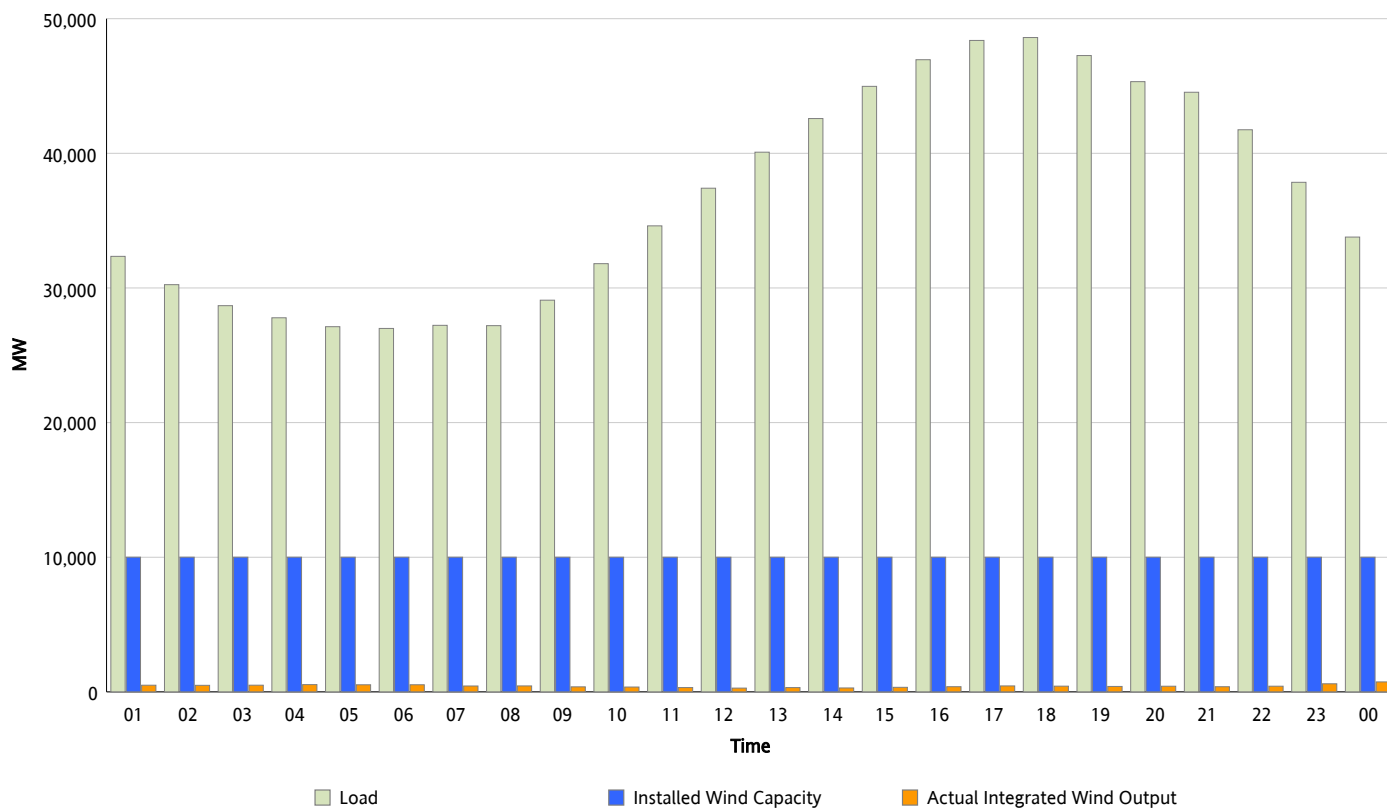
ERCOT Grid Operations

Wind Integration Report : 09/09/2012

Peak Load	48,599 MW
Load Peak Hour (HE)	18
Wind Over Peak	425 MW
Wind Record 06/19/12	8,368 MW
Max Wind Value*	829 MW
Wind Peak Time	23:58
Wind Integration %	2.58 %

Hourly Average Actual Load vs. Actual Wind Output

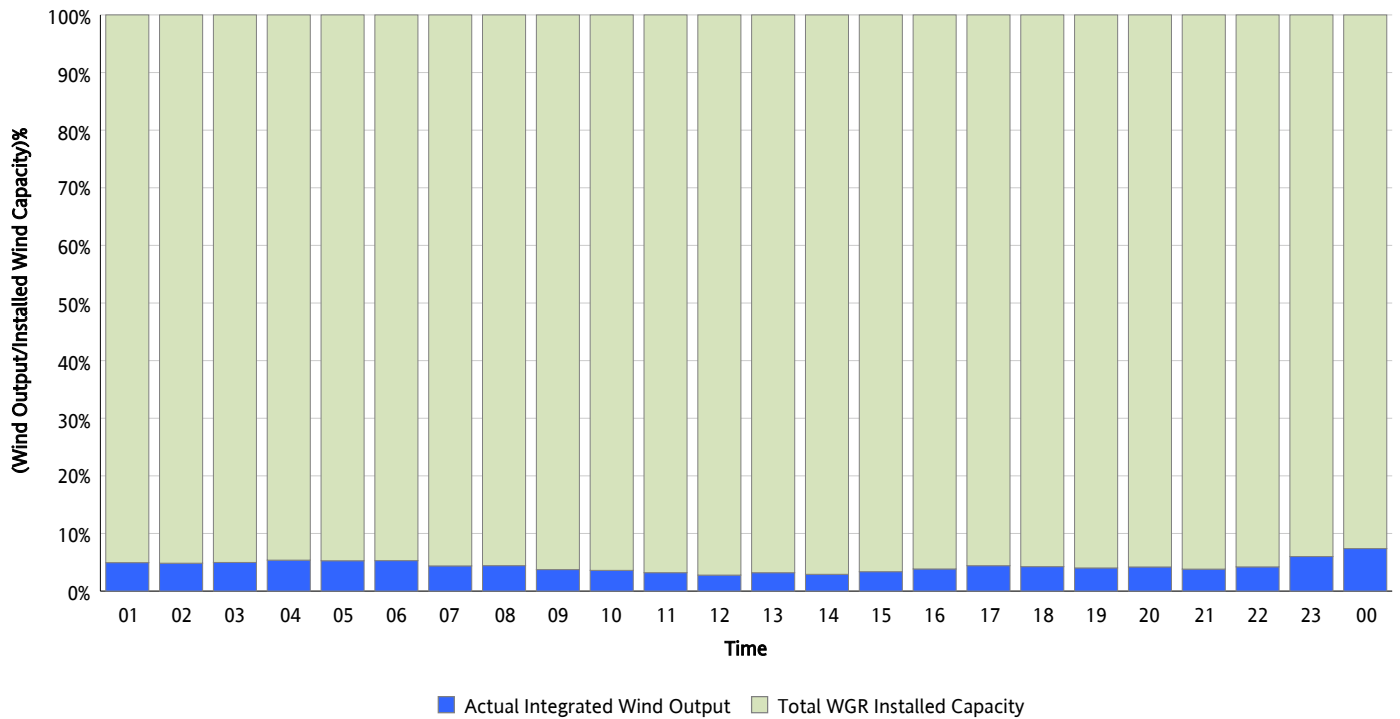
09/09/2012



* Wind Record and Wind Max represent instantaneous values and the rest of the values are integrated over the hour

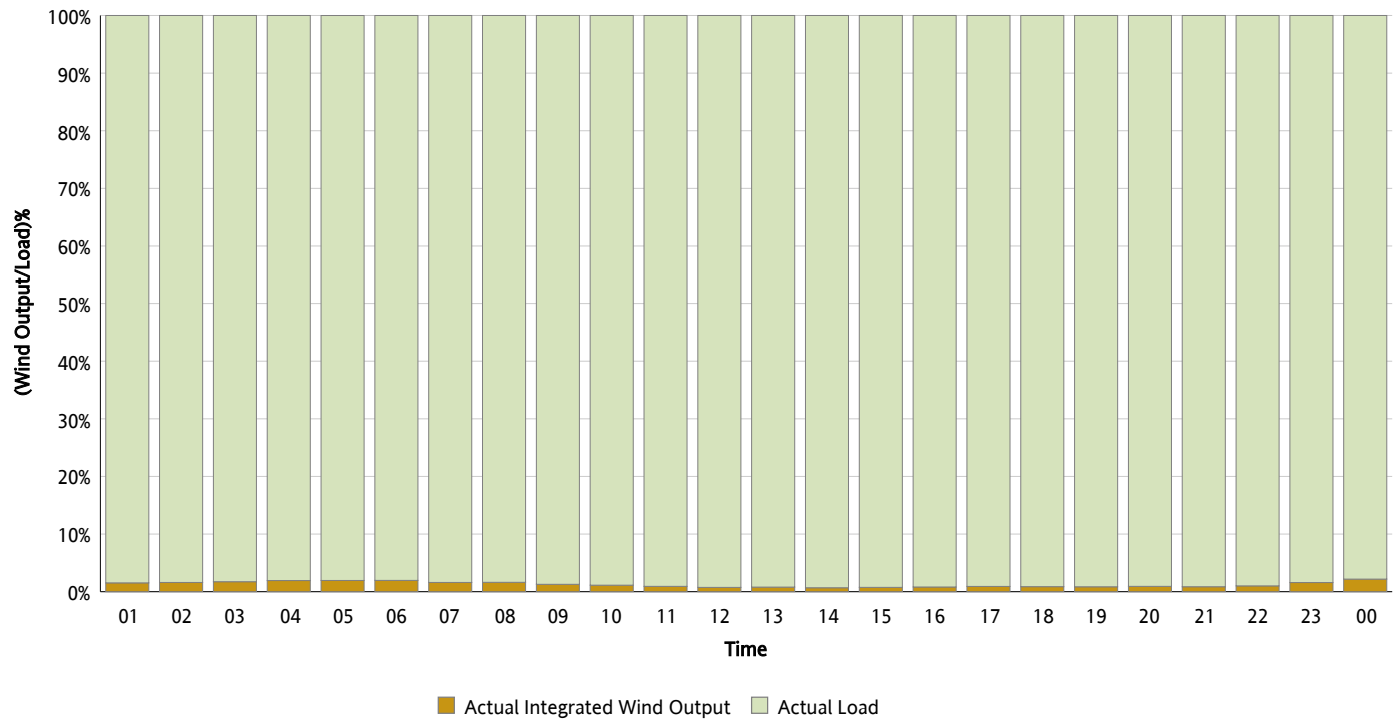
Actual Wind Output as a Percentage of the Total Installed Wind Capacity

09/09/2012



Actual Wind Output as a Percentage of the ERCOT Load

09/09/2012



ERCOT Load vs. Actual Wind Output

09/02/2012 - 09/09/2012

